

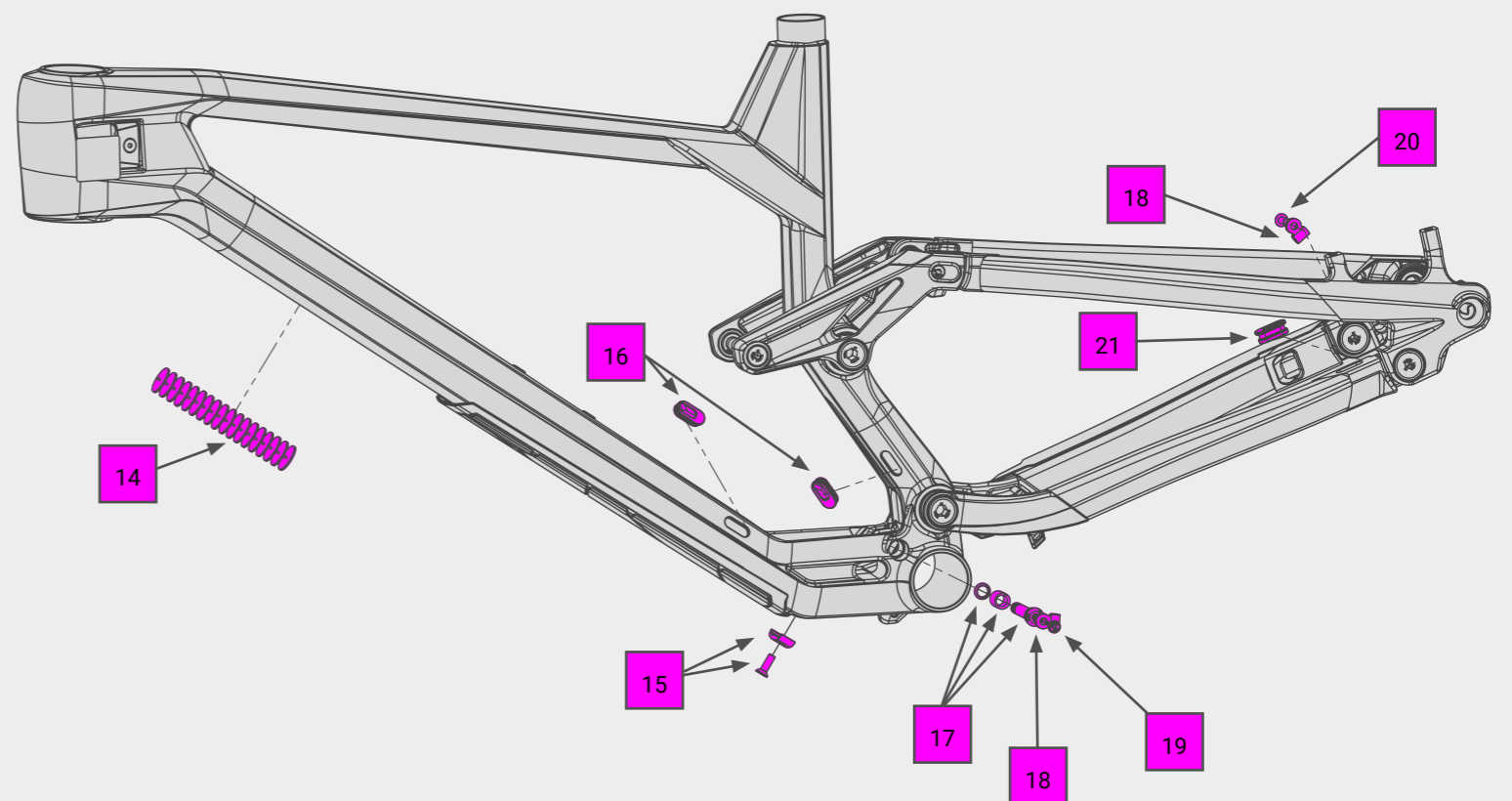
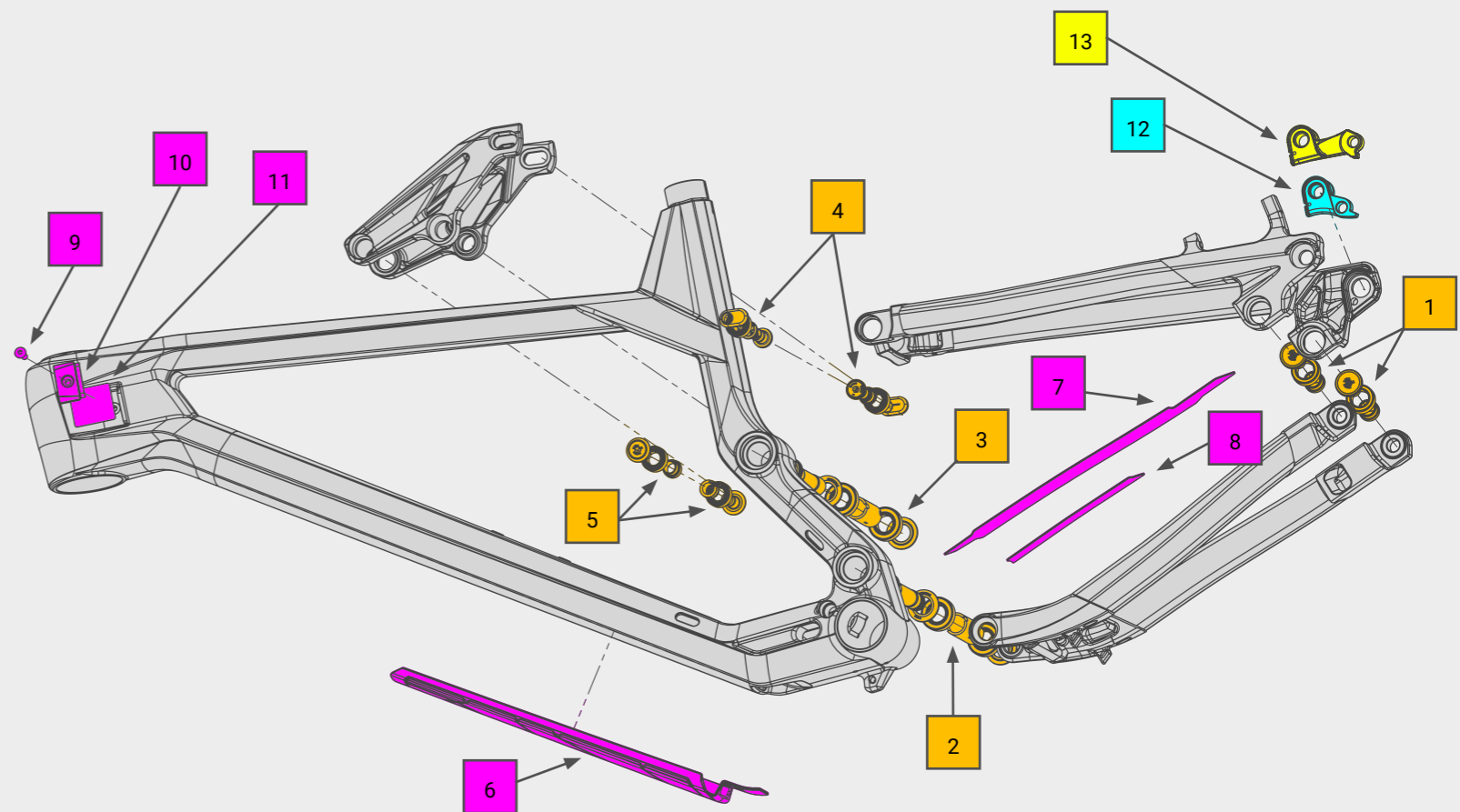
# SLIDE TRAIL

MODEL YEAR: 2019 -

PLEASE USE THE ITEM NUMBER TO FIND THE PART IN OUR ONLINESHOP: [BIKE-DISCOUNT.DE](http://BIKE-DISCOUNT.DE)

# RADON

| NO. | QTY. | ITEM NO. | DESCRIPTION   |
|-----|------|----------|---|
| 1   | 2    | 10433    | BEARING SET HORST LINK LEFT SLIDE TRAIL<br>BEARING DIMENSIONS: 1X „3802 2RS MAX“                  |
| 2   | 1    | 10430    | MAIN BEARING SET<br>BEARING DIMENSIONS: 2X „7902 2RS MAX“   |
| 3   | 1    | 10431    | DEFLECTION LEVER BEARING SET SLIDE TRAIL<br>BEARING DIMENSIONS: 2X „7902 2RS MAX“                 |
| 4   | 1    | 10434    | BEARING / SCREW SET DEFLECTION<br>LEVER SEAT STAY   |
| 5   | 1    | 10416    | JAB / SLIDE TRAIL / SKEEN TRAIL 2020 SHOCKMOUNT SET TOP<br>BEARING DIMENSIONS: 2X „63801 2RS MAX“ |
| 6   | 1    | 10423    | DOWN TUBE PROTECTION JAB  |
| 7   | 1    | 34384    | PROTECTION STICKER CHAINSTAY TOP SLIDE TRAIL  |
| 8   | 1    | 34385    | PROTECTION STICKER CHAINSTAY BOTTOM SLIDE TRAIL   |
| 9   | 1    | -        | SCREW ISO 10642 M5X16   |
| 10  | 1    | 34382    | SLIDE TRAIL/SKEEN TRAIL CF CABLE BUSHING  |
| 11  | 1    | 34383    | PROTECTION STICKER HEADTUBE   |
| 12  | 1    | 10240    | DERAILLEUR HANGER 10240 AXH (SHORT)   |
| 13  | 1    | 10171    | DERAILLEUR HANGER 10171   |
| 14  | 1    | 34018    | NOISE DAMPER BRUSH  |
| 15  | 1    | 33910    | CABLE GUIDE BOTTOM BRACKET FOR JAB/SLIDE TRAIL  |
| 16  | 2    | 33917    | CABLE ENTRY FOR CARBON FRAMES   |
| 17  | 1    | 10413    | JAB / SLIDE TRAIL / SKEEN TRAIL 2020 SHOCKMOUNT SET<br>BELOW                                      |
| 18  | 2    | 33936    | CABLE GUIDE 5MM (5 PIECES)  |
| 19  | 1    | 25617    | SLIDE TRAIL/SKEEN TRAIL/JAB SCREW IN DAMPER BOLT  |
| 20  | 1    | -        | SCREW ISO 7380-1 M5X12  |
| 21  | 1    | 33929    | OPEN PLUG SEAT TUBE   |



- Option 1 - Direct mount derailleur hanger:**  
Shimano 11-speed derailleur
- Option 2 - Standard derailleur hanger (short):**  
Shimano 12-speed & SRAM 12-speed derailleur

**GO TO SERVICE & SUPPORT**

HINWEIS: Sämtliche Informationen, die in diesem Dokument enthalten sind, sind STRENG VERTRAULICH. Jeder Empfänger dieses Dokuments darf die darin enthaltenen Informationen, direkt oder indirekt, nur mit ausschliesslicher, schriftlicher Zustimmung der Firma MBCAD an Dritte weitergeben oder offenlegen. Die Firma MBCAD behält sich alle Rechte in Bezug auf Urheberrechtsgesetz, Patent- und Gebrauchsmusterschutz vor. Lizenzrechte werden hierdurch nicht erteilt.

NOTE: The information or material contained in this document is STRICTLY CONFIDENTIAL and any recipient of this document shall not disclose or divulge, directly or indirectly, this document or the information or material contained herein without the written consent of the company MBCAD. All copyrights, trademarks, patents and other rights in connection herewith are expressly reserved to the company MBCAD and no license is created hereby.

## TECHNICAL SPECIFICATIONS

|                         |   |
|-------------------------|---|
| HEADSET DIMENSIONS      | TOP: 1 1/8" SEMI INTEGRATED (ZS 44)<br>BOTTOM: 1,5" SEMI INTEGRATED (ZS 56)   |
| SEAT POST DIAMETER      | 31,6 MM   |
| SEAT CLAMP DIAMETER     | 34,9 MM   |
| BREAKMOUNT REAR         | POSTMOUNT Ø 180 MM  |
| REAR BRAKE              | MAX. 203 MM   |
| DROPOUT                 | X12/BOOST 148 MM  |
| SHOCK DIMENSION         | LENGTH: 185 MM X 55 MM<br>HARDWARE: UPPER: 54 MM TRUNNION; LOWER: 8 X 22,2 MM |
| MAX. PERMISSIBLE WEIGHT | 135 KG  |
| TIRE                    | MAX. 29" X 2,4"   |
| BOTTOM BRACKET STANDARD | BB92 PRESSFIT   |